



# **Total utilization of Laminaria hyperborea**

**One of Europe's largest natural  
resources**

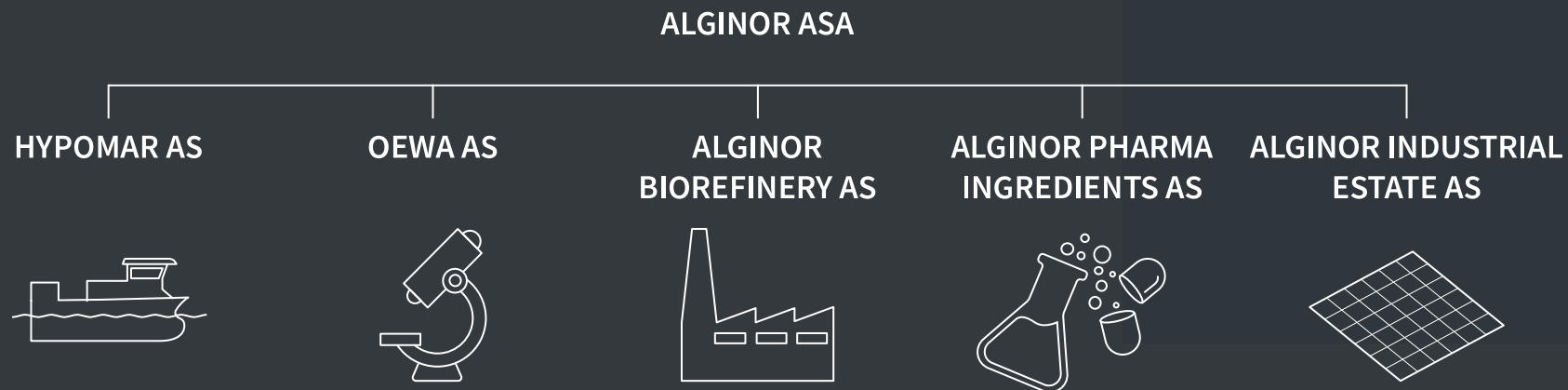
**Simon Haughom, Research Associate**



- HQ in Haugesund, Norway
- 50 employees
- 540 shareholders\*
- 5 fully owned subsidiaries

Haugesund

Husøy



\*incl. major shareholder Borregaard, Hatteland, Zirconia and the EIC Fund Equity raise in 2021 of NOK 370 million April 2023, Borregaard increases ownership to 38%

# ALGINOR ASA—Total utilization of *Laminaria hyperborea*

*Laminaria hyperborea*  
Alginor's raw material.

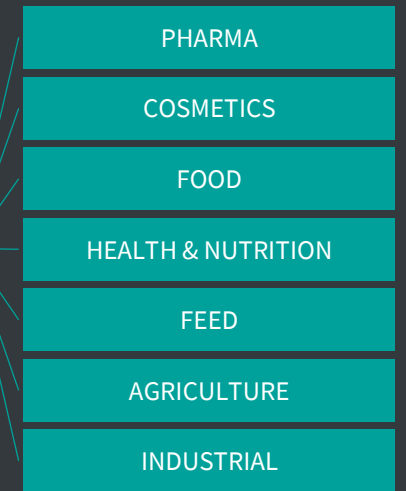
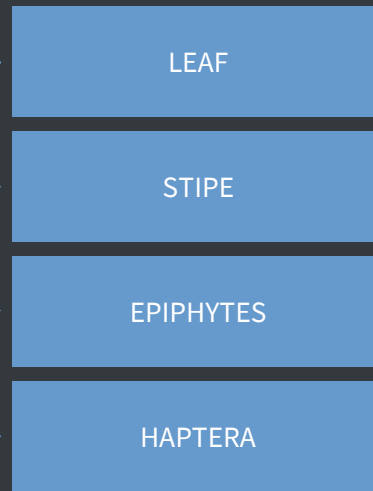
**Alginor Starting Materials (ASM)**  
Kelp Intermediates/biorefinery  
feedstock

**Alginor Ingredients**  
11 highly refined ingredients

7 global **market**  
**segments**

UPSTREAM

DOWNSTREAM



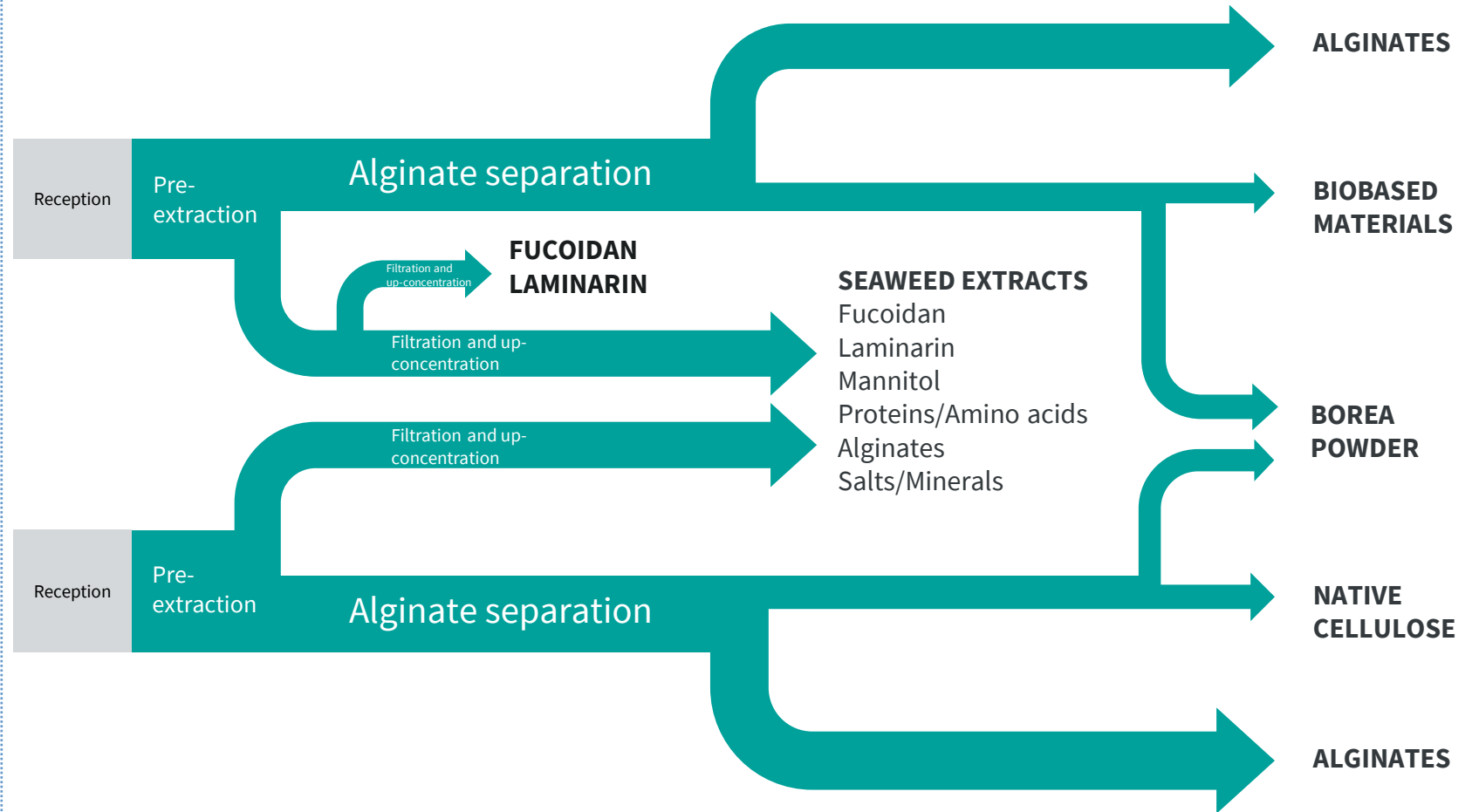
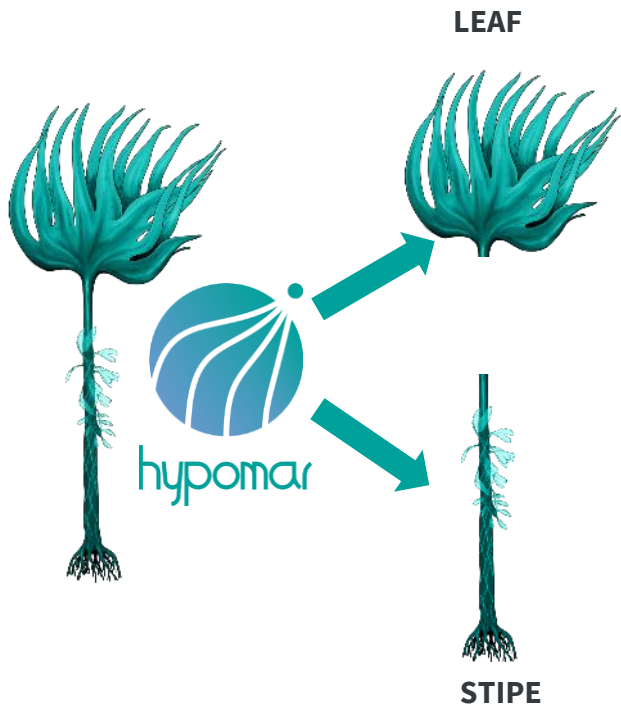
**The Hypomar method** ensures Alginor consistent and shelf-stable starting materials without preservatives.

**The AORTA tech. platform** applies novel biorefining techniques to produce high-value products.

**Marketing and direct sales** of products B2B

UPSTREAM

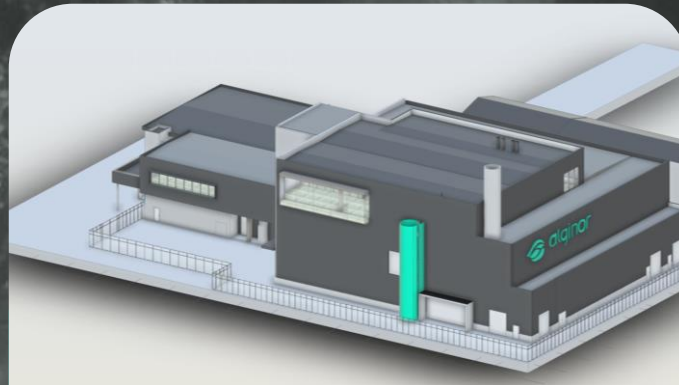
DOWNSTREAM



## Business model—integrated supply chain from harvesting to B2B-sales



Harvesting vessels

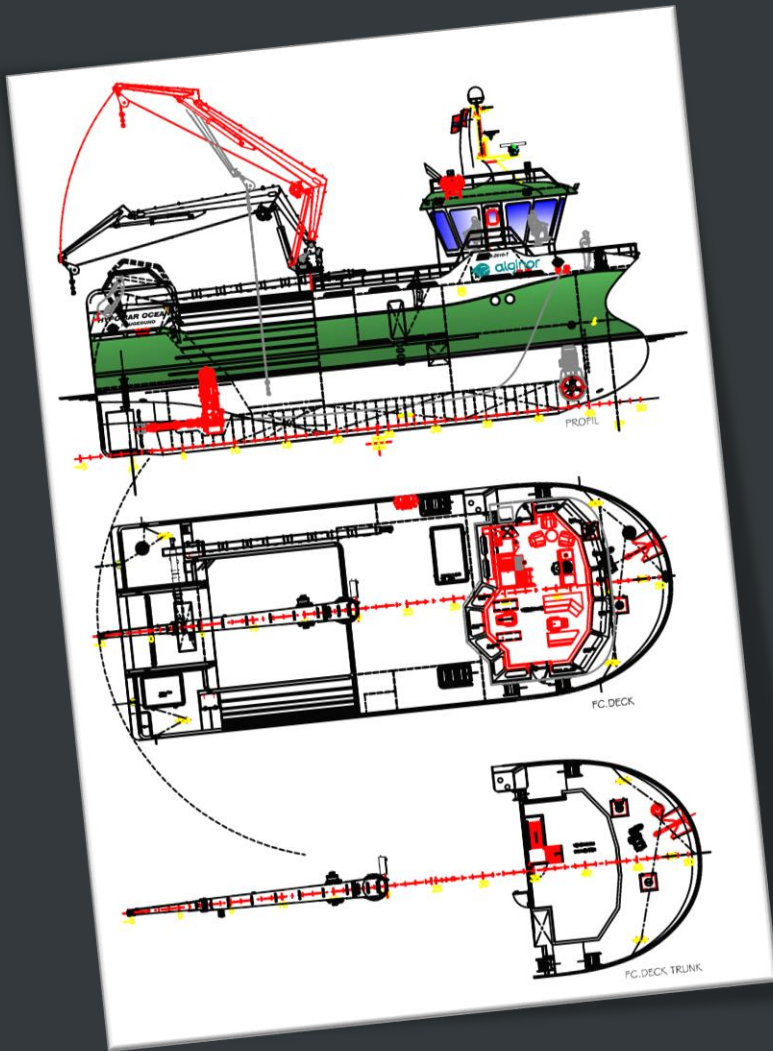


Biorefinery



Ingredients

# Hypomar Ocean—A new era in kelp harvesting

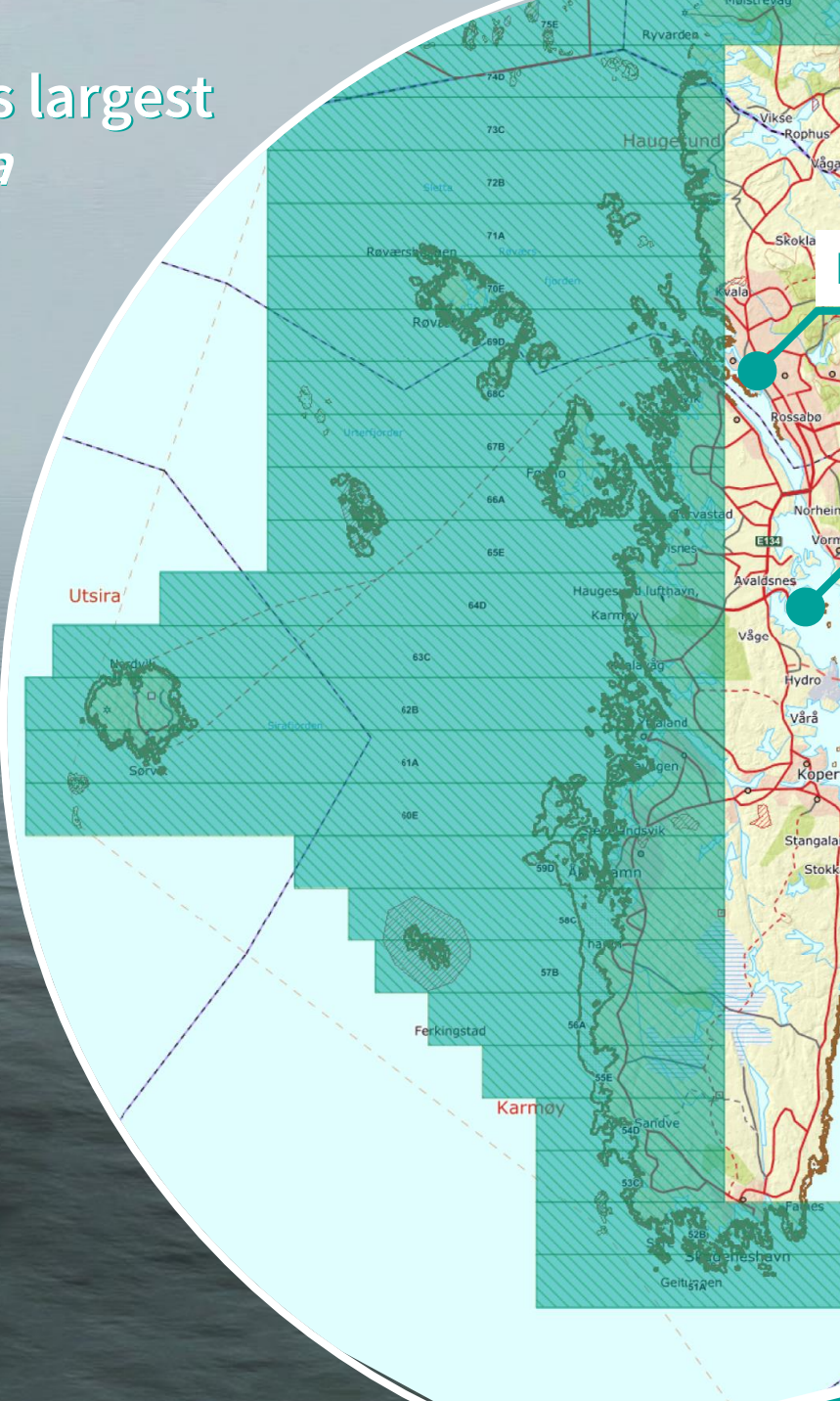


## Our harvesting vessels:

- On-board pre-processing and stabilization without harmful chemicals
- Safer operations compared to existing fleet
- More stable and continuous operations
- Increased harvesting capacity
- Diesel-electric battery hybrid



# Unhindered access to the world's largest biomass of *Laminaria hyperborea*



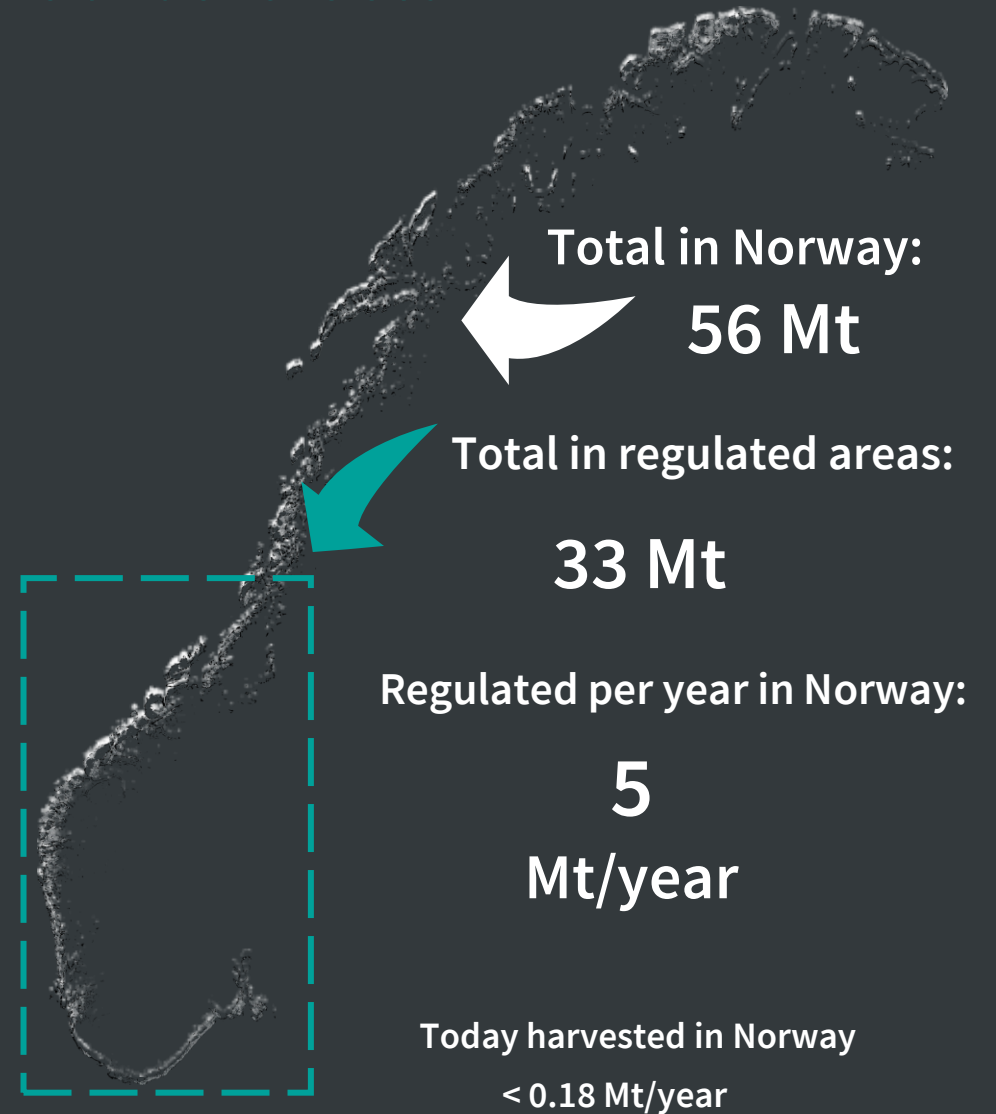
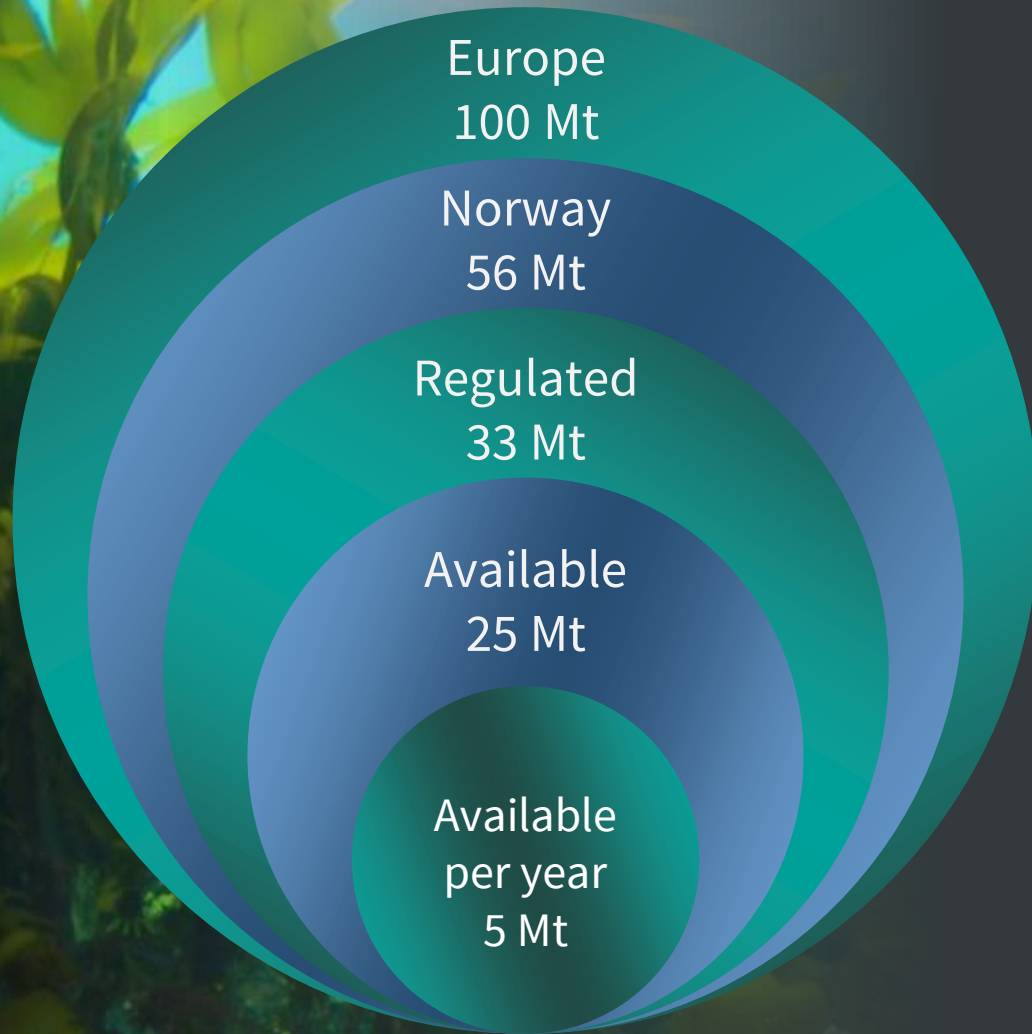
Headquarters



Operations



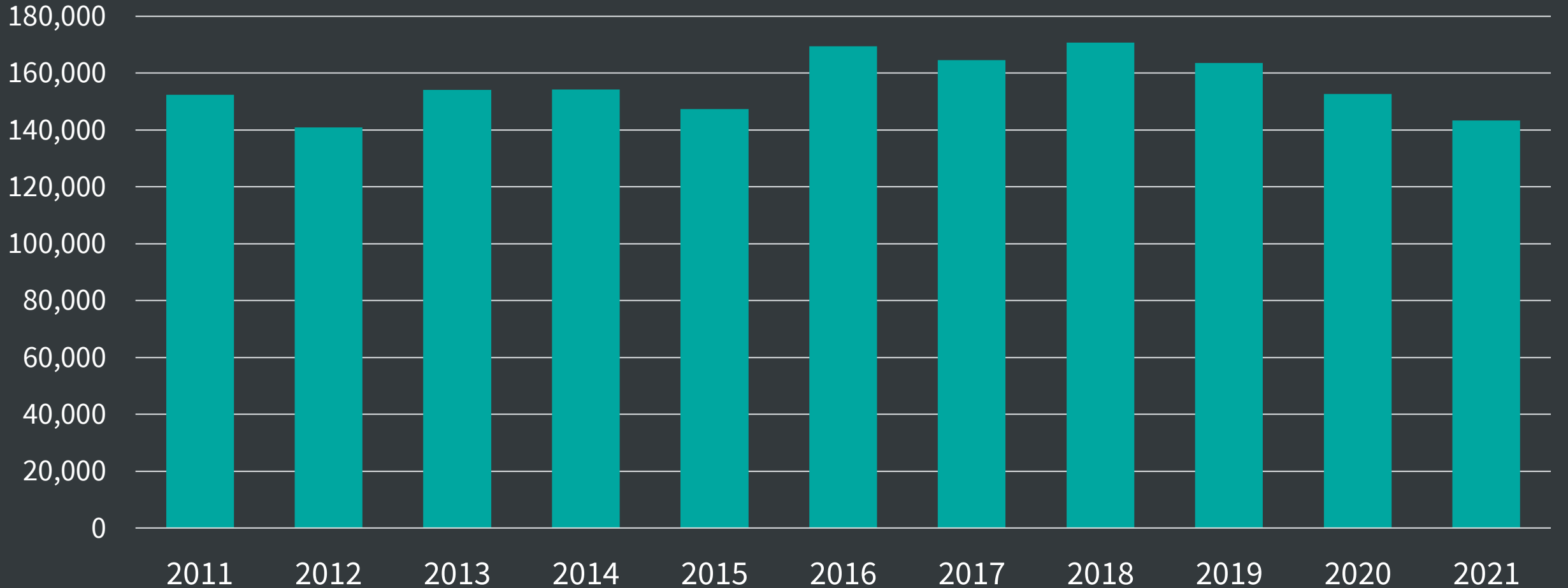
# A forest of palms under the sea



The graphic shows the actual distribution of *L. hyperborea* along Norway — not the Norwegian coastline.

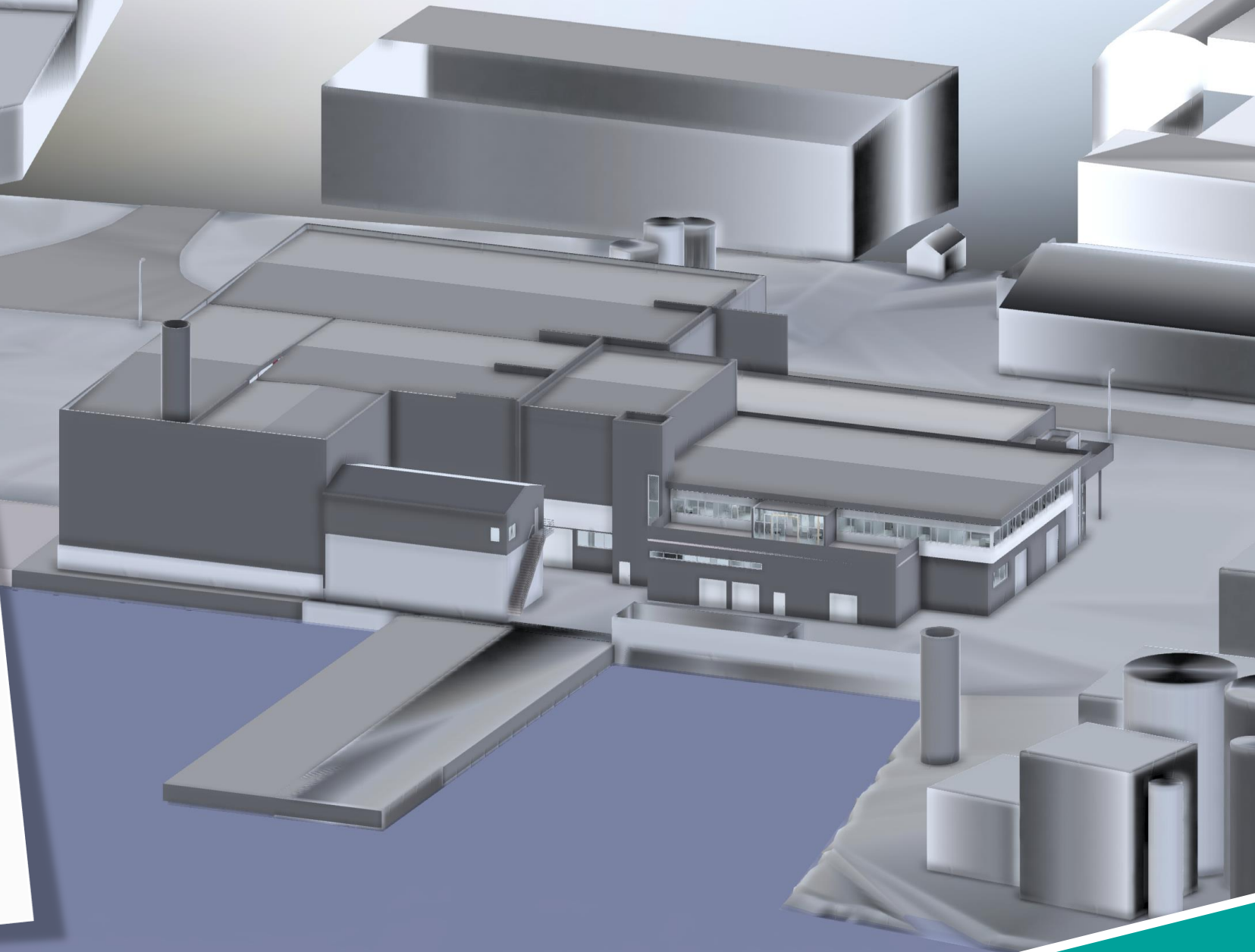


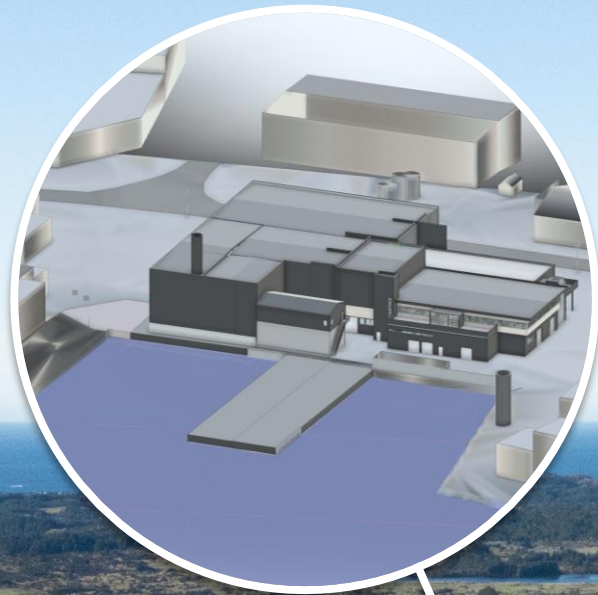
# Kelp seasonal catch in Norway in tonnes



## The biorefinery

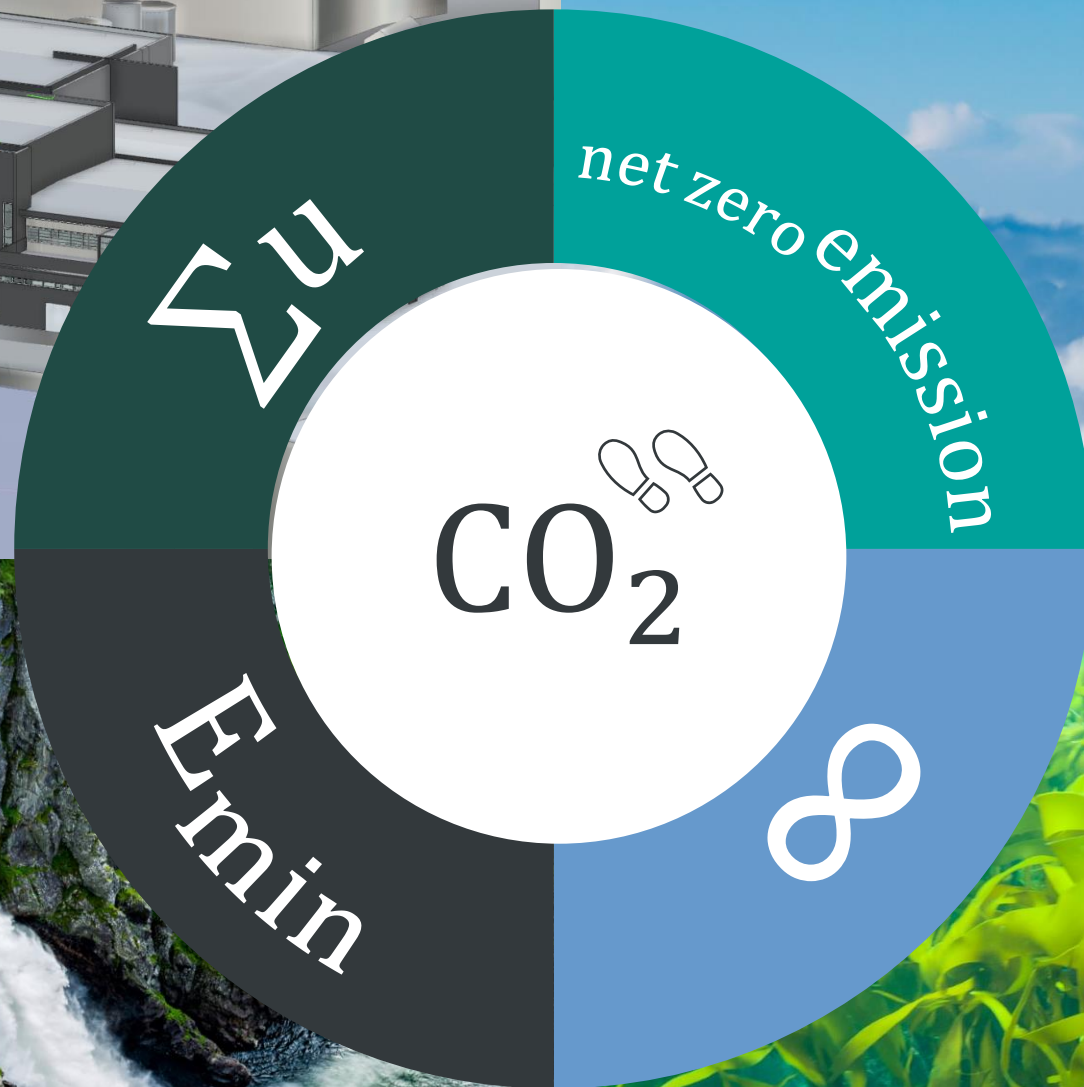
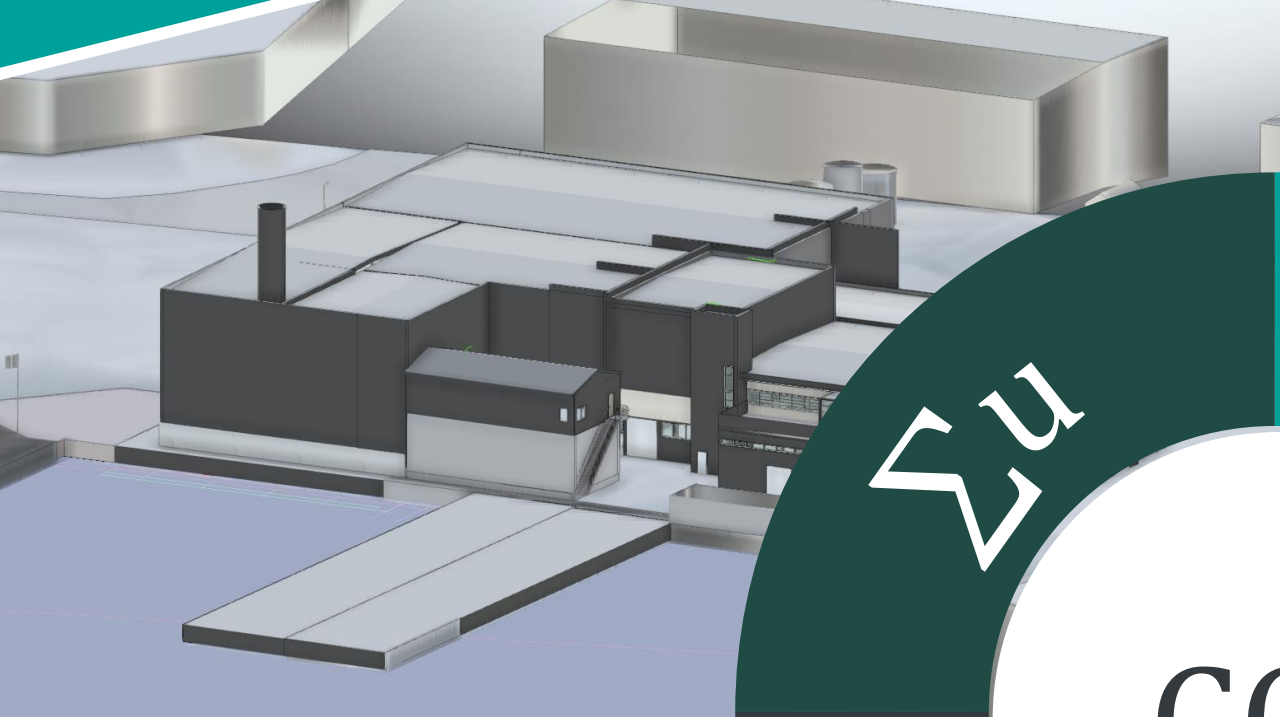
We are building a state of the art biorefining facility, with capabilities to extract all components from *Laminaria hyperborea* at an industrial scale





# MARINE INGREDIENTS made in Norway







*Unlocking the Hidden Treasures of the Oceans.*